

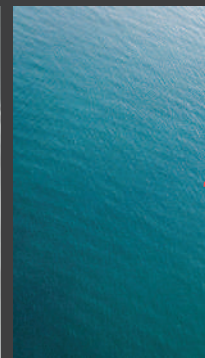
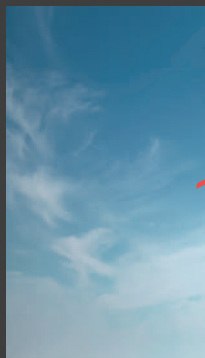
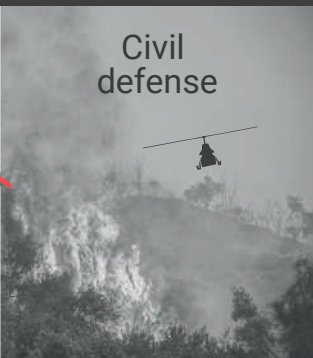
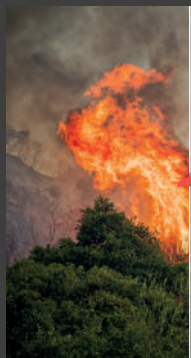
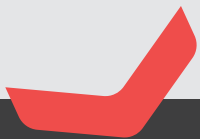
SOKO

500 KG PAYLOAD WEIGHT



SOKO is an unmanned helicopter with heavy payload and cargo capabilities up to 500kg weight for emergency operations, search and rescue, and surveillance.

Soko is provided with multifuel engine which allows naval operations as well as land based.



MAIN FEATURES



High-resolution optical camera including IR.



Automatic takeoff and landing.



Manual flight mode waypoint navigation.



Customizable mission system as per end user needs.

TECHNICAL SPECIFICATION

- Endurance: 3.7 hours
- Range: 200 km
- Cruising speed: 140 km/h
- Maximum speed: 160 km/h
- Payload: 500 kg
- Width over skis: 1.43 m
- Height: 2.1 m
- Total length: 8.3 m
- Main rotor diameter: 7.85 m
- Tail rotor diameter: 1.375 m
- MTOW: 1018 kg
- Fuel capacity: 134 kg/169 l
- Ceiling: 4.000 m
- Engine: TSE200
- Fuel: JET-A1



JOINT VENTURE



SkyFlare

GREEN POWER
TURBINE SYSTEMS



ABIONICA
SOLUTIONS

skyflare S.L. | skyflare.eu | admin@skyflare.eu

Distrito Digital CV, Avinguda de Jean Claude Combaldieu, s/n 03008 Alicante, Spain